

SNOW GUARD (SEE DET. DWG #A1231 & ROOF PLAN DWG. #A1212 FOR EXTENT) (N.I.C.)

REMOVE EXIST. TILE ROOF & UNDERLAYMENT (SEE ROOF NOTES)

SEE REV. SKETCH Opposite Page.

2" DIA. SOFFIT VENT. DET. DENTIL MOLDING. 1'-0" ± O.C.

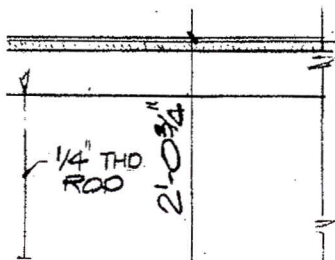
3/4" THICK WOOD STOOD

4" HIGH x 5/8" DEEP METAL REVEAL (PAINT)

5/8" GYP. BD ON 3/8" STU. TUDS EV. 16" O.C.

RATT INSUL.

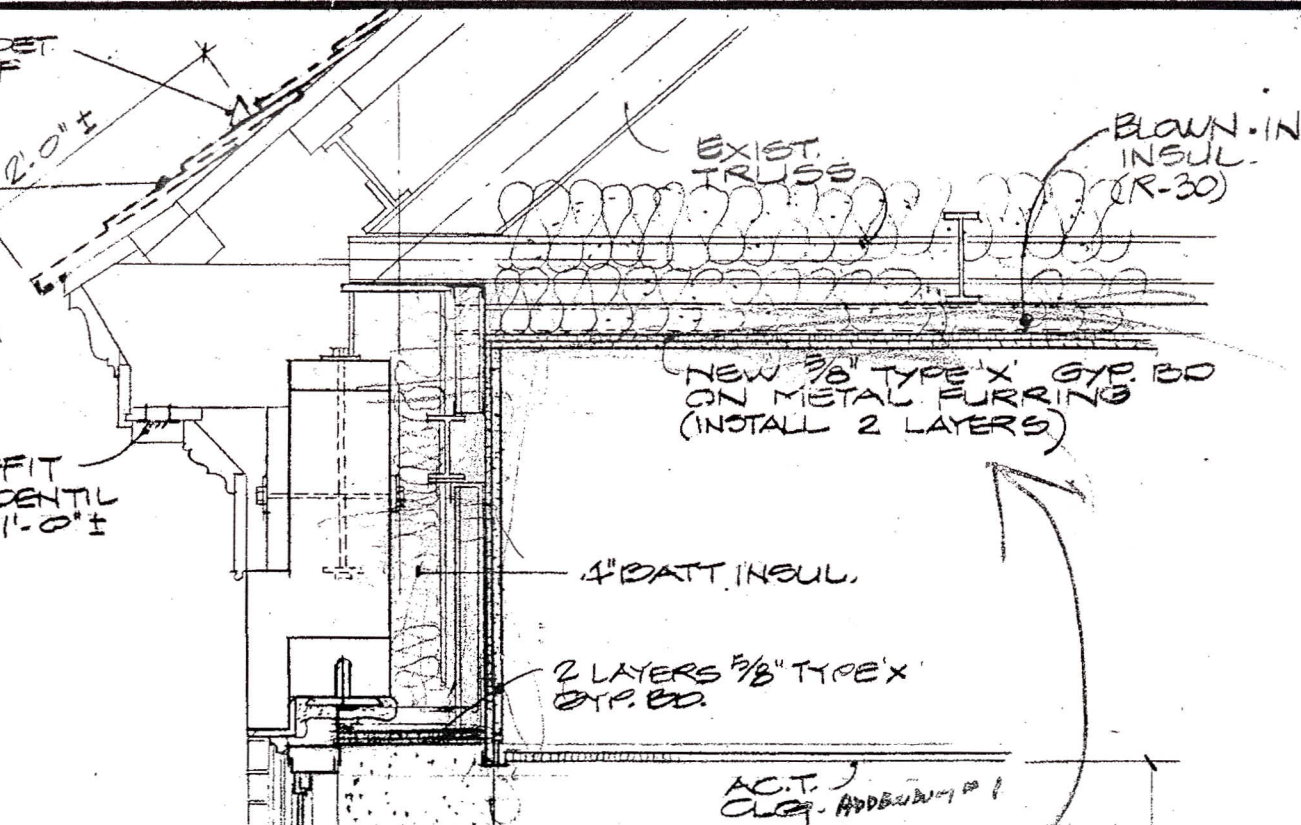
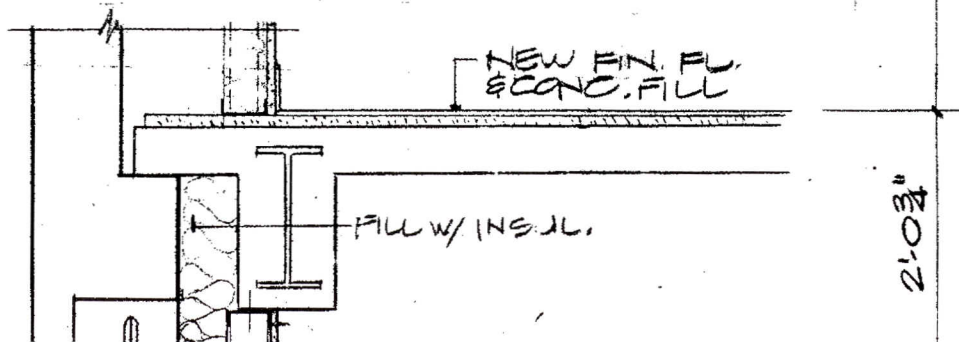
SEE STRUCTURAL DWGS FOR BUILT UP STEEL SECTIONS SECURED TO EXISTING WB COLUMNS. (SEE DET. 19/S-G)



9-13-10
BLDG. 1A ROOF

change note at rated attic ceiling to read:

"New 5/8" type 'x' gyp.bd. on metal furring. (install 2 layers) Use 1 layer of foil faced gypsum bd. on attic side.



ADDENDUM #1

change note at rated attic ceiling to read:

"New 5/8" type 'X' gyp.bd. on metal furring. (install 2 layers) Use 1 layer of foil faced gypsum bd. on attic side.

SNOW GUARD (SEE DET. DWG. #A1280 & ROOF PLAN DWG. #A1262 FOR EXTENT). (N.I.C.)

REMOVE EXIST. ROOF TILES & UNDERLAMENT (SEE ROOF PLAN NOTES)

See Rev. Sketch Opposite Page.

NEW 3/4" THICK HARDWOOD STOOD

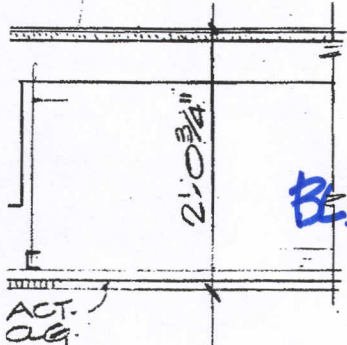
2" DIA. SOFFIT VENT BET. DENTIL MOLD'G. 1'-0" @ O.C.

METAL REVEAL (PAINT) (TYP.)

5/8" GYP. BD

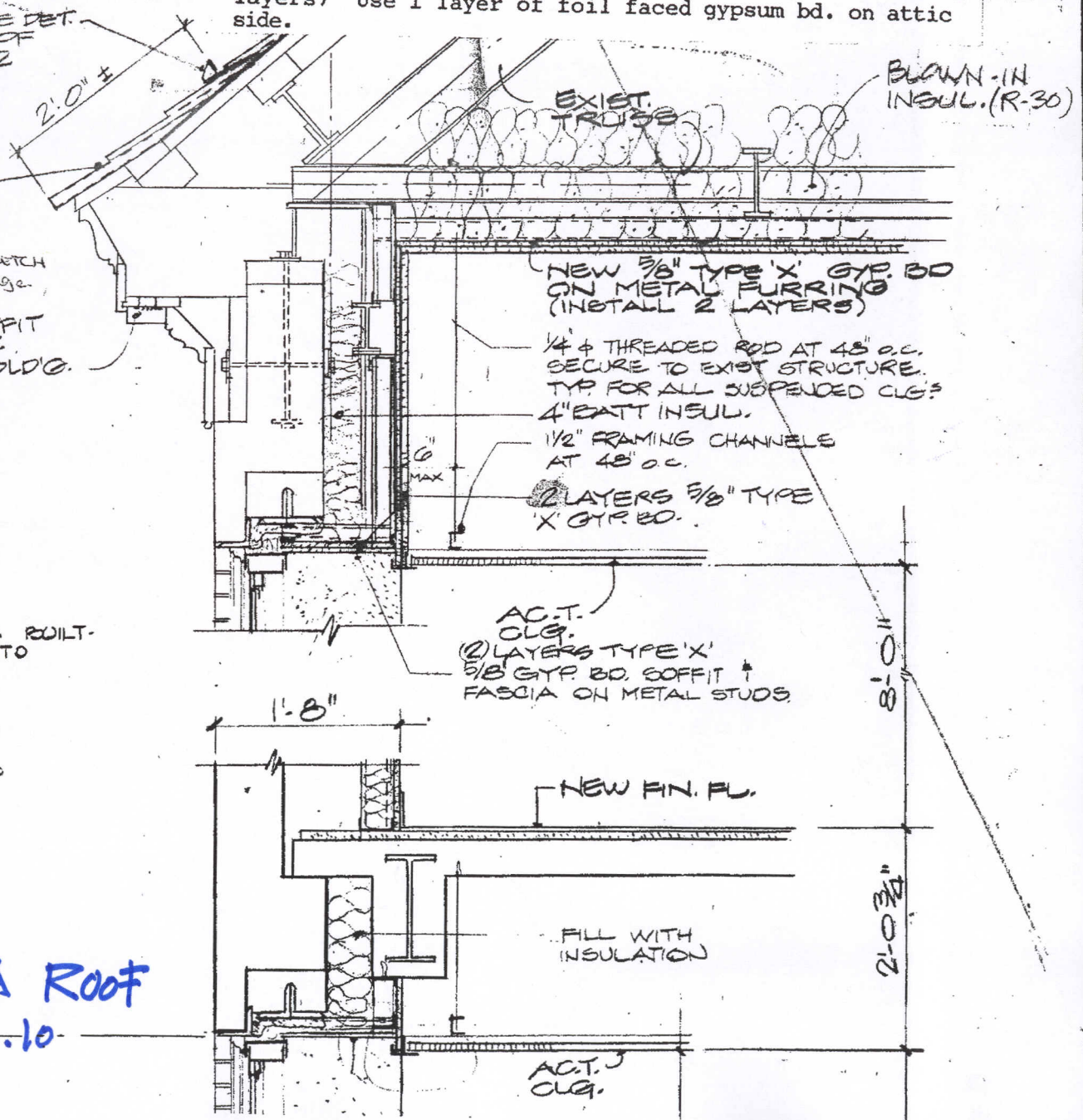
SEE STRUCTURAL DWGS FOR BUILT-UP STEEL SECTIONS SECURED TO EXISTING WB COLUMNS, 4" BATT INSUL.

1/4" ϕ THREADED RODS @ 48" O.C. SECURE TO BOTTOM OF EXIST. SLAB



Bldg. 2A Roof

9.13.10



EXIST. TRUSSES

BLOWN-IN INSUL. (R-30)

NEW 5/8" TYPE 'X' GYP. BD ON METAL FURRING (INSTALL 2 LAYERS)

1/4" ϕ THREADED ROD AT 48" O.C. SECURE TO EXIST. STRUCTURE. TYP. FOR ALL SUSPENDED CLG'S

4" BATT INSUL.

1/2" FRAMING CHANNELS AT 48" O.C.

2 LAYERS 5/8" TYPE 'X' GYP. BD.

ACT. CLG. 2 LAYERS TYPE 'X' 5/8" GYP. BD. SOFFIT + FASCIA ON METAL STUDS

NEW FIN. FL.

FILL WITH INSULATION

ACT. CLG.

2'-0 1/2"

1'-8"

8'-0"

2'-0 3/4"

ACT. CLG.